
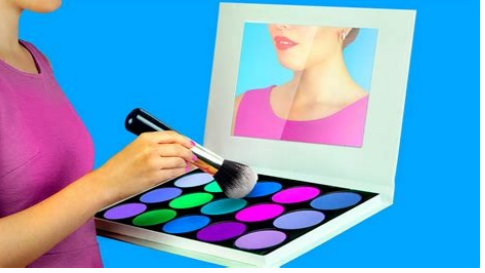


I'm not robot  reCAPTCHA

Open

How to glue sheet metal to plastic



The \hat{A} epoxy consists of two components, the epoxy and a hardener. Before buying the sticker, \hat{A} you need to consider the following aspects. Then you will be sure, \hat{A} required preparation. The most common brands are J-B Weld, Gorilla and Loctite. Once healed you will be able to store, sand or drill, if necessary. This super glue provides a high strength bond that \hat{A} resistant to humidity, cold temperatures and a range of chemicals. We have put together a list of some of the strongest metal glue to available plastic products. See product label \hat{A} to see if it works on these surfaces. Will a adhesive that offers a high-strength bond is required, especially if you want to form a bond between two non-porous surfaces such as plastic and metal. Wood glue or handmade glue works best on materials such as wood and paper that are porous. Ideally, you would use a glue gun that \hat{A} was designed specifically for production, as opposed to a simple handmade glue gun if you are handling any kind of repair. Is the sticker able to withstand resistance and pressure? You only need a little glue to cover a large area When using certain glues, you will need to block your items, always consult the product label to confirm whether the blocking is necessary. The item you are repairing will live outside? Hot Glue Gun Hot glue sticks can be used to glue the metal to the plastic. The epoxy can also be purchased in a stucco consistency. This type of adhesive \hat{A} is effective on all types of substrates, including wood, metal, glass and plastic. Types of adhesives Most glue products can be purchased in a tube, but some products come in other forms as epoxy stucco. Additional precautions to be taken the following: Take care to protect your airways, you want to work in a well ventilated area. Super glue is not the ideal choice for creating a permanent bond between dissimilar surfaces, as there are better adhesive options available, such as Loek for a glue that can be applied to different surfaces and is effective and versatile. Crazy the two-component clay putty and this will activate the materials. Some products need to be blocked, while others do not. Safety guidelines When working with adhesives, many of the adhesive products available contain solvents and extreme levels of volatile organic compounds (VOCs). This type of adhesive can be used on different surfaces. Easy to use Everyone wants a product that is easy to use. Once cured, it gives you a permanent and strong bond. When you buy and apply glue, thankfully, many other people have done it before and there are plenty of information and tips available for you to turn to. Other versions are available in two separate containers and you will be asked to mix them by yourself. For example, many adhesives are resistant to changes in water and temperature. Unlike instant glue, it takes some time for the silicone to cure. You need to select the correct excellent glue, and there are many kinds of super glue to choose from. Yes, you can plastic super metal glue. So, which glue to use is dictated by what you need to do and the drying time of the glue. You can use a syringe-like product for smaller projects; The product contains your two components and mixes when applied. Use only the required amount so you don't waste any of the stickers. The epoxy if dried is clear, and if you need to do it, you can sand it. Refer to the product instructions for application and terminal or press the items together. Even if the super glue dries

